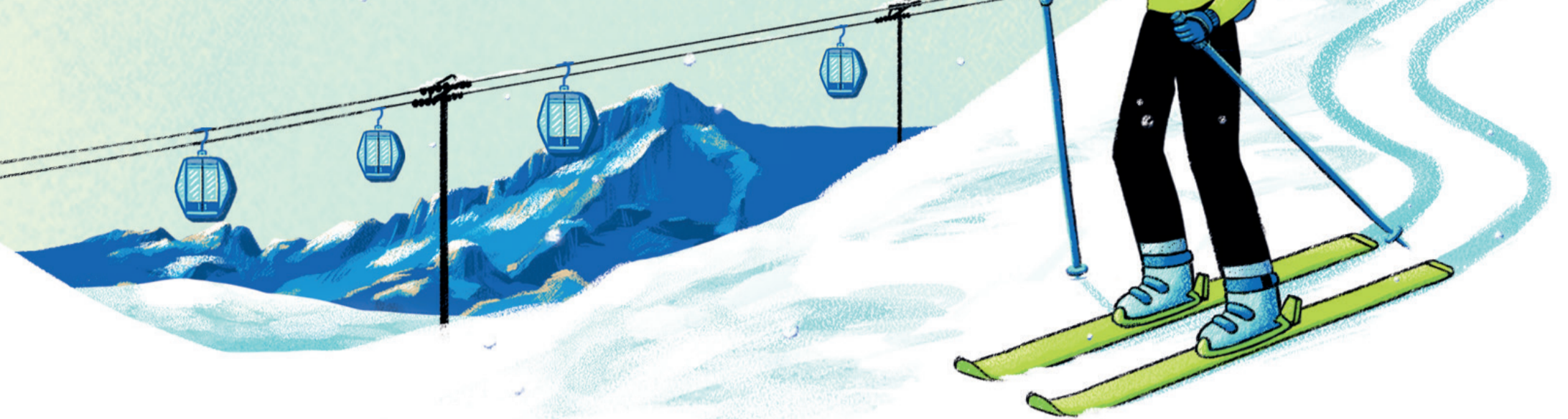


10 rules of conduct on the ski slopes

Enjoy carefree days on the slopes.
Always prioritise prudence!

 112


1. Always wear your helmet

Wearing a helmet is mandatory under the age of 18, but we recommend you wear one at any age.



2. Respect signs and markings

Respect the rules of conduct and all signs and markings on the piste.



3. Behaviour on the pistes

Always behave in a manner suited to your personal ability so as not to endanger or prejudice yourself or others.



4. Speed

Remember to ski at a speed suited to your training and to the weather.



5. Right of way and trajectories

Maintain a direction that does not interfere with that of other skiers and give priority to mechanical equipment on the piste.



6. Overtaking

Before overtaking another skier, ensure you have enough space and visibility.



7. Enter and cross carefully

At a junction, before entering a piste or when crossing a beginner area, reduce your speed and ensure you are not endangering yourself or others.



8. Stopping

When stopping, always keep to the side of the piste. It is forbidden to stop in narrow places or where visibility is restricted. Skis should be placed off the piste.



9. Duty to rescue and assist

You are duty bound to assist any person in difficulty and to report the accident promptly to the emergency number 112 or to the piste's staff.



10. Avoid climbing or descending on foot

It is forbidden to walk or use snowshoes on the ski slopes, except in cases of urgent need. When descending without skis, always keep to the side of the slope.

ALSO REMEMBER...

Insurance

It is mandatory to have insurance covering civil liability for damages or accidents caused to third parties.

Impaired state

Remember that it is forbidden to ski in impaired psychophysical conditions.

Black pistes

Before skiing on a piste with a high degree of difficulty (black piste), ensure your physical fitness and technical skills are adequate.

Skiers with disabilities

Always give way to disabled skiers on the piste and when accessing the ski lifts. Moreover, ensure they have enough space and look out for their route and trajectory.